



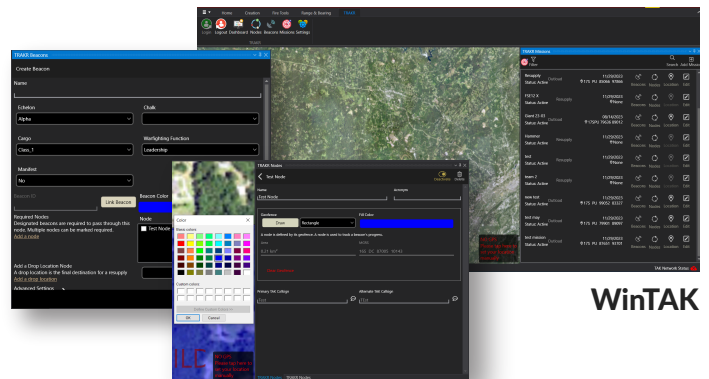
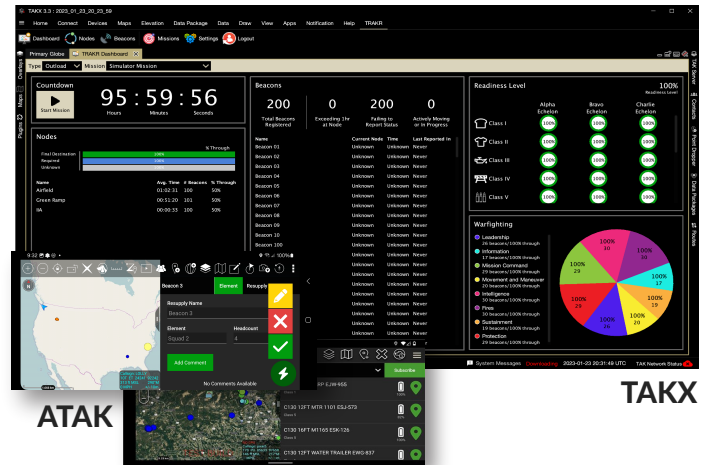
Enhancing Operational Tracking and Reporting for Visible Accountability

TRAKR is an ATAK, WinTAK, and TAKX plugin that tracks beacons through designated locations during any operation type with the ability to use geofences – whether a 96-hour outload or personnel and general equipment movement. This plugin creates unique mission types and populates a dashboard so users can customize tracking and reporting for all movement operations. TRAKR also provides snapshot reporting for better operational decision making.



Engineered with the Warfighter in Mind

Designed for seamless integration into the TAK ecosystem (WinTAK, TAKX, ATAK), TRAKR enhances acceptance and facilitates integration with current systems and workflows.



Benefits of TRAKR:

- Determine readiness level faster and more reliably
- Assign and track equipment and people in near-real-time; allowing all Leaders access to critical data
- With the right sensors and geofences, confirm accountability of equipment and people



Sensor-Agnostic
Beacon Tracking



Dynamic Geofencing
Capabilities



Detailed Metrics
Dashboard



Near-Real-Time
Tracking



Customizable
Mission Types



Historical Data
Capture and Reporting



Accessible on
Multiple Devices



Secure Authentication
and Data Access



Scan the
QR code to
learn more!

TRAKR is a critical tool for more streamlined mission-planning and operations.



v 25.2.0

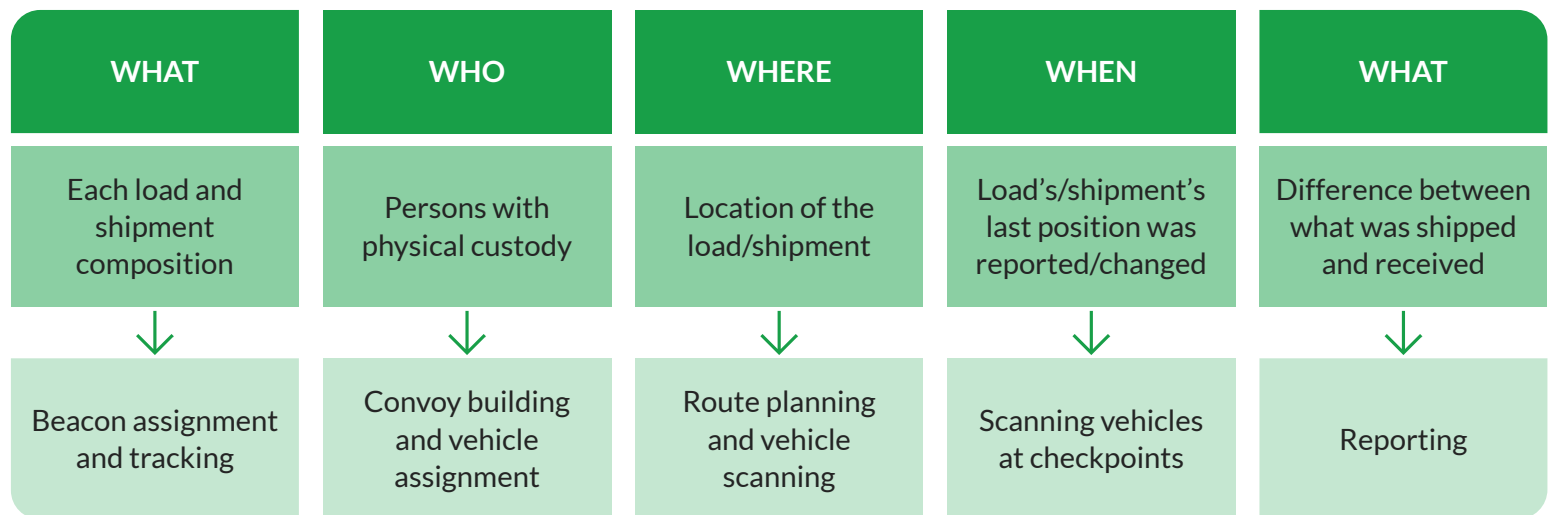


Logistics in a Contested Environment

TRAKR Logistics Tool (LOG) enables real-time tracking of warfighter requests for all classes of supply, and empowers Commanders to track shipments across all echelons. It modernizes the connection between legacy Army systems, allowing Leaders to efficiently manage shipments through an intuitive interface. TRAKR provides visible data for Leaders to monitor operations and integrates with other data sources to support logistics.

Chain of Custody: Shipping, Receiving, and Reconciliation

This system provides a chain of custody by logging and reporting at echelon.

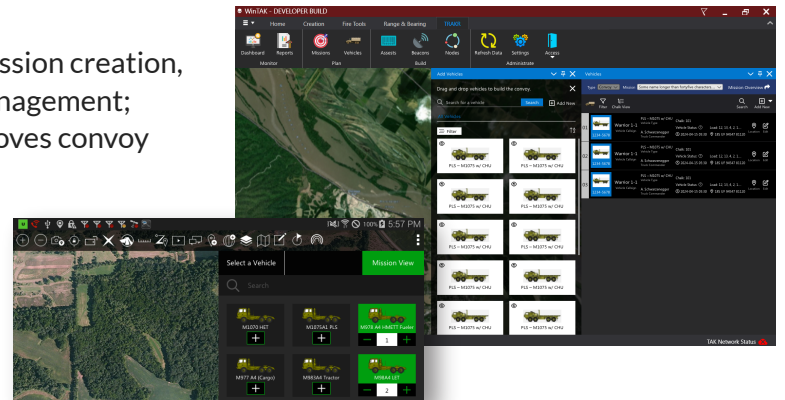


TRAKR Capability

Convoy Management

Convoy management in WinTAK and ATAK encompasses mission creation, route planning, vehicle and load assignment, and beacon management; TRAKR vehicle scanning enhances vehicle verification, improves convoy building, and provides real-time notifications to Leadership.

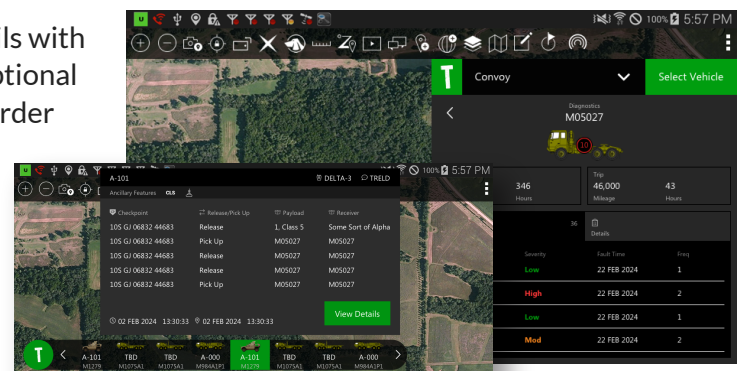
- Supports multiple roles
- Allows for load assignment
- Enables vehicle list creation and management
- Creates convoy checkpoints
- Generates logs automatically
- Supports documentation



Vehicle Details

Vehicle scanning in ATAK updates vehicle status, health, and details with each scan, and displays faults, mileage, and operating hours. An optional Heads Up Display allows commanders to view vehicles in march order and access details without launching the plugin.

- Includes a Heads Up Display (HUD)
- Displays fault codes
- Reports mileage
- Provides customized views for different roles





Funded Capabilities

Development includes user-centric design, software engineering with extensive testing, user engagements, and training.

OUSD Funded Development

Authentication	Secure authentication with single sign-on through a preferred identity provider across all platforms. An advanced framework integrates the program's preferred provider.
Outload Mission Planning	Manage outload mission types with settings for time, description, POCs, TAK call sign, and chawks. The integrated search and filtering provide advanced mission management.
Resupply Mission Planning	Manage resupply mission types with settings for time, description, POCs, and TAK call sign.
Node Management	Create and manage customizable nodes with unique shapes and colors. Disable beacons and use the integrated search, filtering, and deactivation for advanced management.
Outload/Infil Beacon Management	Create and manage beacons with manifests, nodes, POCs, assignments, echelon, and chalk. Track, verify receipt, manage subscriptions, and view auto-assigned beacons. Disable nodes in the beacon view and perform advanced management tasks with the integrated search, filtering and deactivation features.
Resupply Beacon Management	Create and manage resupplies and add items to manifest lists. Use the integrated approval process for sending resupplies from the EUD and desktop. Track resupply with validation on receipt and confirm delivery and conduct AAR reporting with the built-in feedback mechanism.
Dashboards	Use near-real-time snapshots to report on beacon location, status, readiness level, warfighting function, and nodes. Review unique dashboards for different mission types. The top-level mission selector provides quick view changes.
Beacon Integration	Positive GPS and NAL SHOUT Nano beacon support. Framework to support any beacon/sensor type.
Settings/Configurations	Configure a custom default color, client, and server settings, including refresh and polling rates.

C5ISR Funded Development

Convoy Mission Planning	Create convoys and chawks using the integrated QR code scanner for C5ISR. Uses a robust approval process for shipping, delivery, and receipt during convoy.
Fleet Vehicle Management	Track and manage vehicles with a lightweight system displaying faults, load weights, and other relevant metrics.
Roles/Permissions Management	Manage user roles and access to convoy missions with varying statuses and views based on unit-defined roles.
Convoy Reporting	Generate reports for convoy mission planning using both new and historical data.
Alerts/Notifications	Review real-time convoy status and approval notifications within TAK. Search and filter notifications by type and severity for advanced management.



Planned Capabilities

These unfunded capabilities are a subset of ideas and concepts that evolve and expand the capabilities of TRAKR to meet the dynamic needs of users. Development of these features include user-centric design, software engineering with extensive testing, user engagements, and training.

Unfunded Capabilities

Customizable Dashboards	Build custom dashboards with widgets for unique data sets based on user roles. Manage multiple dashboards and create a widget library with existing system data.
Weather Data Integration	View local weather map, radar, and data on the dashboard with up to 72-hour forecasting. Optionally integrate with the Convoy feature.
Customizable Reporting	Enable Soldiers to build and export reports from TRAKR for external reporting needs.
TAK Chat Integration	Communicate faster among mission, beacon, and node managers with the TAK Chat integration for TRAKR.
Beacon Management	View and manage beacon status, health, and mission assignments.
Route Planning	Integrate with route planning plugins like TrailBlazer for improved route management and tracking of vehicles, materials, and beacons in missions.
Document Management	Manage and store material-related documents like invoices, packing lists, and other documents. Share documents across user roles.
Electronic Proof of Delivery	Collect digital signatures and photos for proof of delivery.
Load Planning	Based on vehicle type and package volume/weight, determine the number of vehicles needed and the transportation details.
Predictive Logistics	Use machine learning to analyze past movements and predict future logistical outcomes, providing intelligent recommendations.
Bump Plan	Support bump plan management for each chalk and display conflict alerts based on execution and weight.
Manifest Management	Use QR/barcodes to manage personnel and support CAC scanning for tracking with built-in reader and external hardware support.
Convoy Dashboard	Use near-real-time snapshots to report on vehicle location, status, load, shipping, and delivery locations.

CONTACT SHERPA 6

Al Pertuz
Product Owner

apertuz@sherpa6.com
www.sherpa6.com

